

[View this email in your browser](#)



WELCOME NEW BOARD MEMBERS

At BPWA's annual meeting in October we voted to confirm two new board members, Stephanie Bodoff (right) and Jane Andersen. Jane, a retired civil engineer, will be our emergency services coordinator, and Stephanie will be our new website coordinator. This month we've asked Stephanie to answer 3 questions for our newsletter community.

1. Tell us a little bit about yourself.

My name is Stephanie Bodoff. My husband and I moved to the Berkeley hills 3 1/2 years ago after having lived in the West Bay for 23 years. I recently retired from a career in technical communications for enterprise software, and I'm still figuring out how to use all my newly found time. [Read More](#)



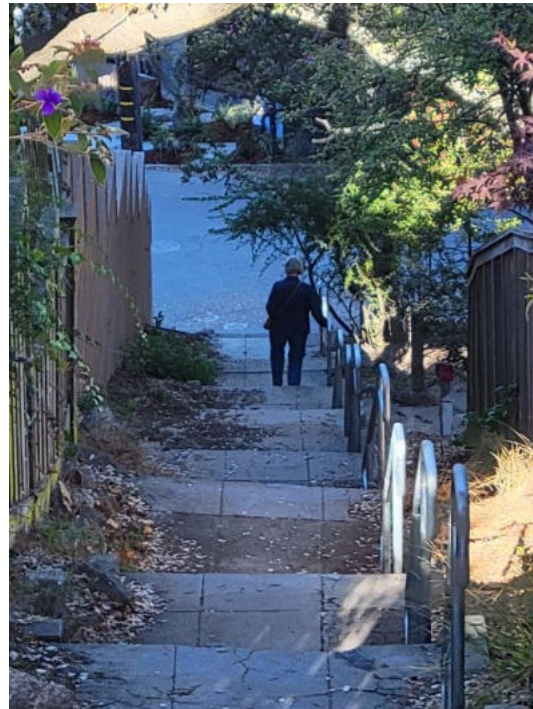
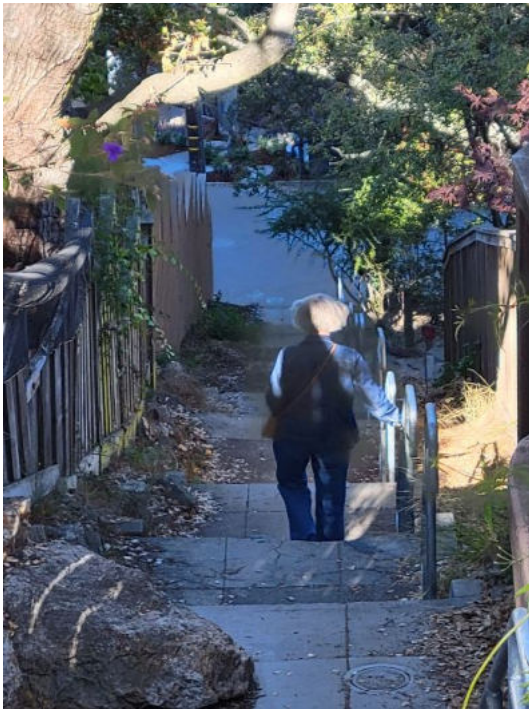
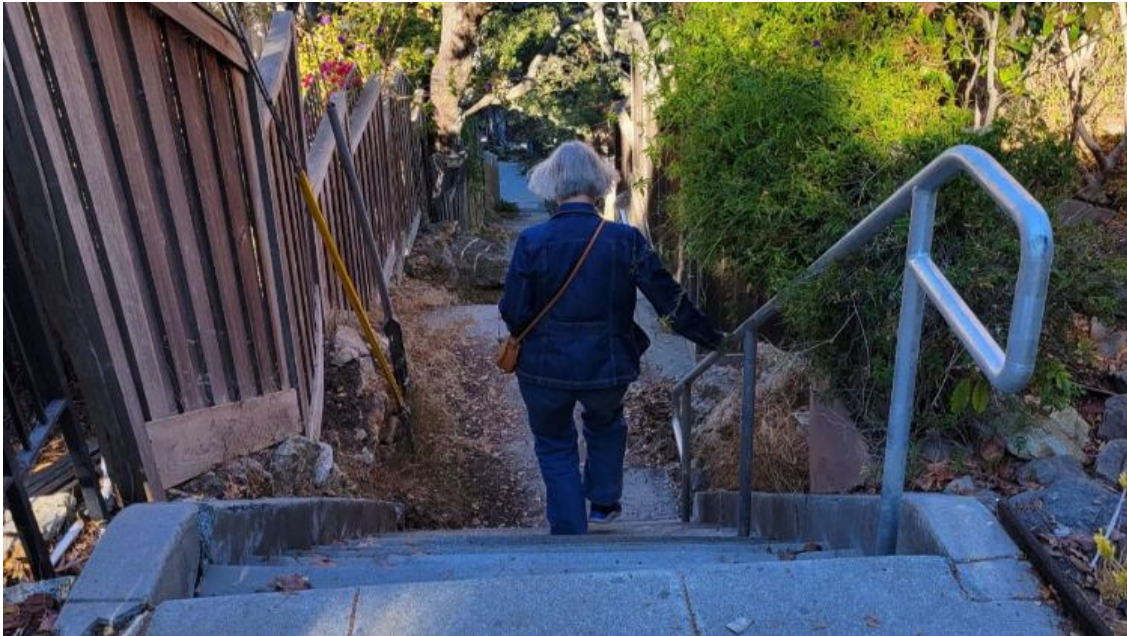
CEDAR PATH REPAIRS UNDERWAY



Rotten steps replaced on Cedar Path

BPWA's intrepid path-building team is currently finishing up much-needed repairs and realignment on [Cedar Path](#), which starts at the east end of Cedar Street and goes up (steeply, with 75 steps) to connect with La Vereda Road. *Top left*, David Kittams (left) and Nick Jones install new steps; *top right*, Diane Resek (left) and longtime path-building leader Steve Glaeser hammer in stakes; bottom row, Glaeser with rotted-out steps that are being replaced.

NEW HANDRAIL FOR VINCENTE WALK



Above, BPWA board member Stephanie Bodoff on top (top), middle (above left), and lower (above right) sections of Vicente Walk.

Berkeley installs new handrail on Vicente Walk with T1 funds

The City of Berkeley recently installed a new handrail on Vicente Path, a steep path with 98 steps that connects Vicente Avenue with The Alameda in northeast Berkeley near the Kensington border.

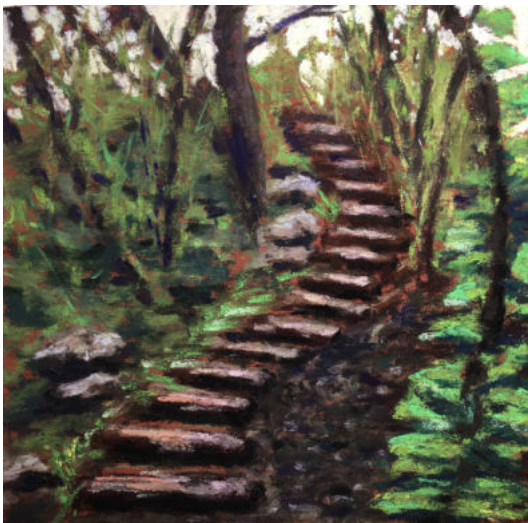
The city of Berkeley Public Works Department purchased 12 segments of railing for \$36,777 with funds from Measure T, the infrastructure bond passed by Berkeley votes in 2016; the bond included \$200,000 for path repairs. The Public Works Department installed the handrails.

Stephanie Bodoff, a new member of the BPWA board, said that she uses Vincente Walk to go to the Kensington Farmers Market on Sunday mornings and on other errands at Colusa Circle.

"It's quite a long path consisting of groups of steps interspersed with flats," Bodoff says.

"Until recently it had no handrail and I always worried that one day I would fall while descending. To my delight I recently discovered that a handrail had been installed. Thank you, city of Berkeley, for helping make our paths safer!"

WINNER! T-SHIRT CONTEST



Congratulations to Marlene Tobias!

Marlene's design—winding steps up a lush hillside (left)—won our 25th anniversary T-shirt contest. We'll develop the design with her artwork center stage. We'll share the full design soon!

The T-shirt will be limited edition. We'll give one to everyone who donates \$250 or more this year during our annual campaign. And we will also make sure we have some on hand for \$25, which also helps us raise funds for our work on the paths.

A big thank you to everyone who participated and voted! [Click here](#) to see all of the contest submissions.

INVITE OUR BANDANAS TO THANKSGIVING!



BPWA member Jen Bilik's Thanksgiving table features our paths bandana

Our Berkeley paths map bandana is a napkin, and a party favor!

BPWA member Jen Bilik shared this wonderful way to express your gratitude for Berkeley's paths this Thanksgiving. Set your table with our stylish, 22-inch, 100% cotton paths bandana for a napkin, and a party favor (also makes a great holiday gift)! Your guests will thank you all the way to the paths.

We're selling bandanas at the sale price of 5 for \$60 and 10 for \$100. All local orders placed by Friday, Nov. 18, will be delivered before Thanksgiving. **All proceeds go to maintain, upgrade, and build new paths. [Order yours now!](#)**

VOLUNTEER OPPORTUNITIES!

BPWA currently seeks volunteers for the following opportunities:

- **Events and marketing coordinator** — board position to take the lead on organizing BPWA events including Solano Stroll, BAHA tour, annual meeting, and other events; and oversee sales and fulfillment of BPWA swag (events and marketing can be separated into 2 board positions)
- **Social media coordinator** – board or volunteer position to take the lead on social media for BPWA; manage our Facebook, get us on Instagram and Twitter

No experience necessary. We will train you! Interested? Write to BPWA president Janet Byron at info@berkeleypaths.org

MEASURE L UPDATE

By Janet Byron, BPWA President

On Tuesday, Nov. 8, Berkeley voters will consider [Measure L](#), a bond measure that requires a two-thirds vote to pass. The \$650 million bond measure would allocate approximately \$70 million for affordable housing and a wide range of infrastructure projects. Berkeley Councilmember Sophie Hahn made sure that the city's paths network was included on the list.

Berkeley Path Wanderers Association has presented the city council with an approximately [\\$5 million proposed budget](#) for path maintenance, handrails, wayfaring signage, crosswalks, and lighting, based on needs identified in our [Paths Condition Report](#), a survey that we conduct every 5 years; and in close consultation with our partners in the Berkeley Public Works Department.

Measure L has been endorsed by the [Sierra Club](#), [Walk Bike Berkeley](#), [Greenbelt Alliance](#), and other groups. Because Measure L does not specify any particular amounts for path improvements, if the measure passes BPWA will advocate for path spending that improves accessibility and walkability for all path-users, especially as needed in an emergency evacuation.

UPCOMING WALKS

NOTE: Walk leaders request that all participants be vaccinated and boosted, or masked. Heavy rain cancels (we will send an email to let you know).

[Sunrise Hike in Tilden Park](#)

When: Saturday, November 5, 6:15–9 a.m.

Leader: Alina Constantinescu

Start/End: Tilden Park [Inspiration Point](#)

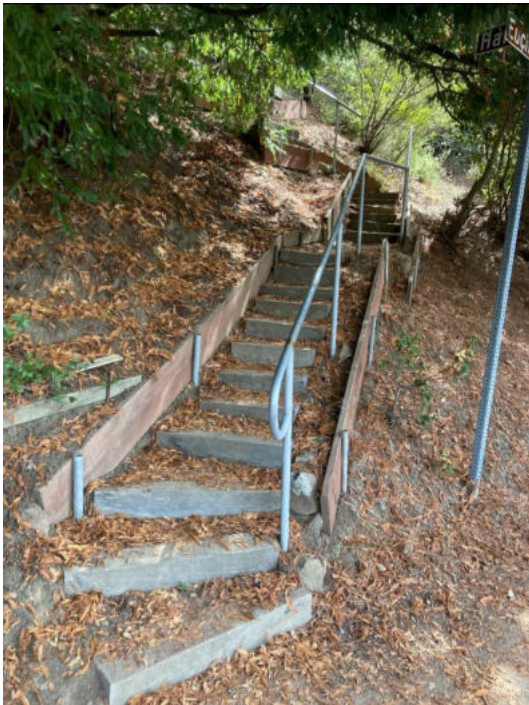
Distance: 4.4 miles

Accessibility: Mostly paved and gentle—but a steep, unpaved path for the final 1/4 mile

Calling all the early risers for a sunrise hike in Tilden Park! The hike is 4.4-miles round-trip with an 800-foot elevation gain starting off IN THE DARK with the city lights twinkling in the distance. The route



follows a mostly paved, relatively easy trail with a steep hill on the last, unpaved 1/4 of a mile. [Read more](#)



[Wandering the North Berkeley Hills](#)

When: Saturday, November 12, 9:00 a.m.–12 p.m.

Leader: John Ford

Start/End: [Live Oak Park](#), meet at the bridge on Shattuck just north of Berryman

Distance: 10.5 miles

Accessibility: A strenuous walk of about 10.5 miles and 41 paths, including many stairs

We will take a convoluted route designed to cover as many paths as we can. If we manage to complete the entire route, we will have walked 41 paths including 50 different segments. There will be lots of stairs, both up and down, and lots of great views. [Read more](#)

[Upper Shattuck/Marin Circle Walk](#)

When: Saturday, December 3, 10 am–12 pm

Leader: Bob Johnson

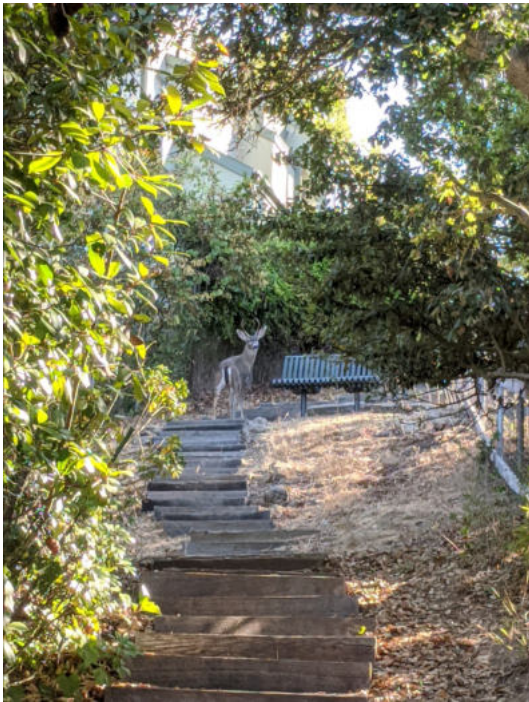
Start/End: [NW corner of Shattuck Avenue and Eunice Street](#)

Distance: 2 miles

Accessibility: A moderate hike with some uphill, a 500-foot elevation gain. Well-behaved dogs on leash are permitted.

This area was developed mainly in the first part of the twentieth century. The neighborhood features fine historic architecture (including some very elegant homes), gardens, street trees, and several interesting paths. There is some uphill exercise, but we will take a moderate pace and will stop along the way to notice various features. [Read more](#)





[From the Rose Garden to Vollmer Peak](#)

When: Saturday, December 17, 8:30 a.m.–1 p.m.

Leader: Tamara Gurin

Start/End: [1200 Euclid Ave \(in front of the Rose Garden sign\)](#) (If you are driving, please allow ample time to find parking—some nearby streets have time limited parking on Saturdays.)

Distance: 8 miles

Accessibility: Strenuous hike, mostly on trails, with an elevation gain of 1,600 feet. Well-behaved dogs on leash are welcome.

Prepare to sweat and have a great workout as we climb 1,600 feet from Berkeley's Rose Garden to Tilden Park's Vollmer Peak and then back to the Rose Garden. We will take sidewalks and 5 stairways to get to Tilden, and the rest of the hike will be on the park's trails. [Read more](#)

PATH MAINTENANCE WORK PARTIES



November break and thank you!

We are taking a break from path maintenance this month. With your help, we have tamed this year's weeds. We expect to be back cleaning paths once the rains start. If you come across paths that could use sprucing up before then, please let us know

at path.maintenance@berkeleypaths.org

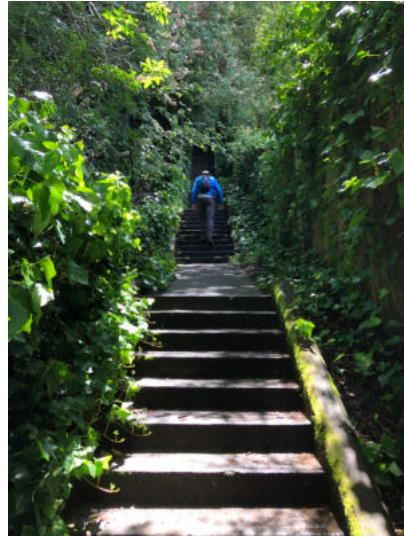
See you soon!

Berkeley Path Wanderers Association

Berkeley Path Wanderers Association (BPWA) is a community organization of people who treasure the public pathways that crisscross our city. [Learn more](#)

The BPWA board generally meets monthly. **Our next board meeting is Nov. 10, 7–8:30 p.m.** Guests are welcome! Please contact info@berkeleypaths.com for more information.

To support our path-building efforts, you can [donate online](#). All donations go toward building new paths, repairing and clearing paths, purchasing handrails, and advocating for paths.



DONATE



Copyright © 2022 Berkeley Path Wanderers Association, All rights reserved.

Want to change how you receive these emails?
You can [update your preferences](#) or [unsubscribe from this list](#).

