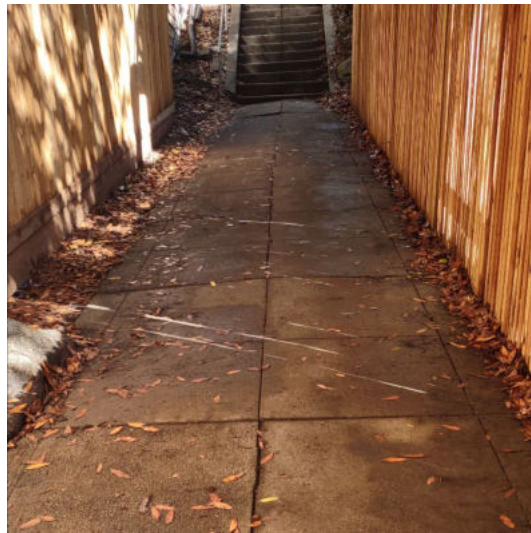
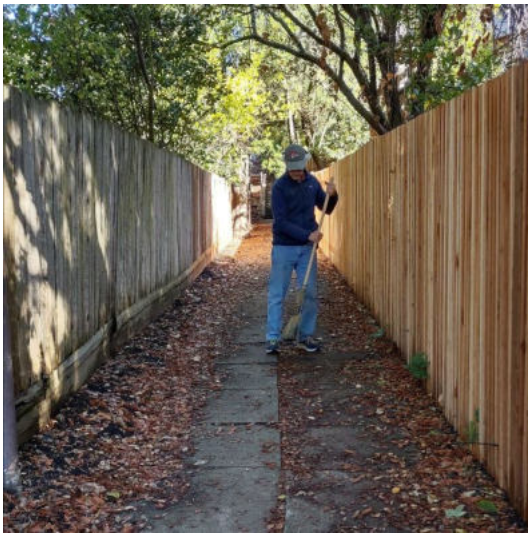


[View this email in your browser](#)



PINNACLE PATH PALS



Above, Paul Litsky sweeps up slippery leaves on Pinnacle Path.

Neighbors Adopt Pinnacle Path

Path includes a beloved mosaic and community acoustic-music venue

By Janet Byron

Paul and Mari Litsky live on Regal Road across the street from Pinnacle Path, a 35-step path connecting Regal Road and Poppy Lane, with a view of the path out their front

window. Longtime members and supporters of Berkeley Path Wanderers Association, they are adopting the path and plan to regularly sweep up.

“There are times, especially in the fall, when the path can get slippery with leaves and a good sweeping would help,” the Litskys wrote to Janet Byron, Path Wanderers president. “And since we use this path a lot we would know when further maintenance was needed.”

Pinnacle Path generates a lot of foot traffic from people using Cragmont and Remillard parks nearby, as well as coming up the hill from Euclid and Spruce streets on Easter Way. It is also home to a beloved mosaic created by the community and “1 Pinnacle Path,” a homegrown music venue with open-air acoustic concerts and movie nights in the spring and summer.

The Litskys learned about adopting paths at the Path Wanderers annual meeting at Live Oak Park in October. “If we hadn't attended it wouldn't have occurred to us that we could do this,” Paul said. “We encourage other members to adopt paths that are near their homes or that they visit often.” [READ MORE](#)

DONATE FOR OUR SILVER JUBILEE

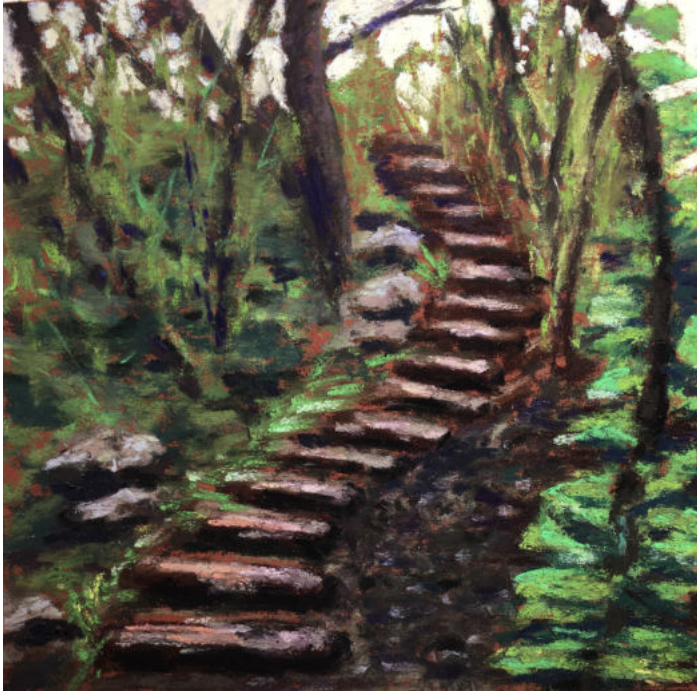
Dear Path Wanderers,

In May 1998, Berkeley Path Wanderers Association was launched by four visionary women: Ruth Armstrong, Jacque Ensign, Eleanor Hall Gibson, and Pat DeVito. Next year, we will celebrate 25 years of unwavering commitment to building, maintaining, and improving Berkeley's beloved paths, stairways, and walkways. The dedication of our volunteers and enthusiastic support of path lovers like you makes all of this terrific work possible. THANK YOU!

2022 was another busy and productive year for the Berkeley paths! The achievements of our 100% volunteer-run organization included collaborating with Berkeley Public Works to repair and add handrails to several paths; repairing 3 paths; hosting 20 path maintenance work parties and 34 free walks; and developing a wish list for comprehensive path improvements. You can see all of our 2022 highlights at:

www.berkeleypaths.org/pathstories/2022highlights

Many of you who have donated in the past few years will be receiving, or have already received, a solicitation letter in the mail. If you're on our newsletter list and have never donated, please consider contributing in honor of our silver jubilee. Your donations help us



purchase more handrails and keep our work going strong for another quarter-century and beyond!

All donations of \$250 or more will receive a beautiful full-color T-shirt featuring a design created especially for us by local artist Marlene Tobias (shown). To celebrate our quadracentennial anniversary, we're offering additional path-related bonuses; go to

www.berkeleypaths.org/donate

to make your donation and learn more.

With deep gratitude, on behalf of the BPWA board,

Janet Byron

President, Berkeley Path Wanderers Association

DONATIONS FOR PATHS

SWAG ALERT! HOLIDAY SPECIAL



Support Path Wanderers and celebrate your love of the paths with a visit to our online shop. This month we are running a special:

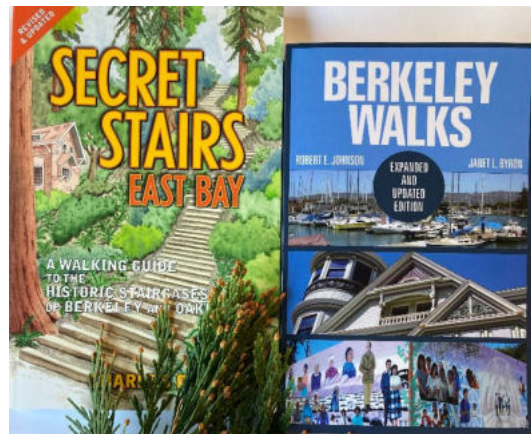
Get a free bandana with your purchase of our set of 4 note cards!

These beautiful note cards feature watercolor renderings by [local artist Karen Kemp](#) of four Berkeley paths: Rose Walk, Fountain Walk, La Vereda Steps, and the Billy Jean Walk. The back of each card includes a short behind-the-scenes fact about the featured path. And as you can see from the photos here, the bandanas are a functioning map of Berkeley.

Just \$20 includes the card set, the map bandana, and tax and shipping. Supplies are limited. The sale ends on December 15.

Also available are 2 fantastic books for path lovers!

Secret Stairs and *Berkeley Walks* are great holiday gifts for people who like to walk and learn the history of the buildings and scenery along the way. These two informative and educational books are great addendums to the BPWA map because they enhance the path and walking experiences.



SHOP NOW!

VOLUNTEER OPPORTUNITIES

We are currently seeks volunteers for the following opportunities:

- **Social media coordinator** – board or volunteer position to take the lead on social media for BPWA; manage our Facebook, get us on Instagram and TikTok (?)
- **Events and marketing coordinator** – board position to take the lead on organizing BPWA events including Solano Stroll, BAHA tour, annual meeting, and other events; and oversee sales and fulfillment of BPWA swag (events and marketing can be separated into 2 board positions)

No experience necessary. We will train you! Interested? Write to BPWA president Janet Byron at info@berkeleypaths.org

UPCOMING WALKS

NOTE: Walk leaders request that all participants be vaccinated and boosted, or masked. Heavy rain cancels (we will send an email to let you know).

[Upper Shattuck/Marin Circle Walk](#)

When: Saturday, December 3, 10 am–12 pm

Leader: Bob Johnson

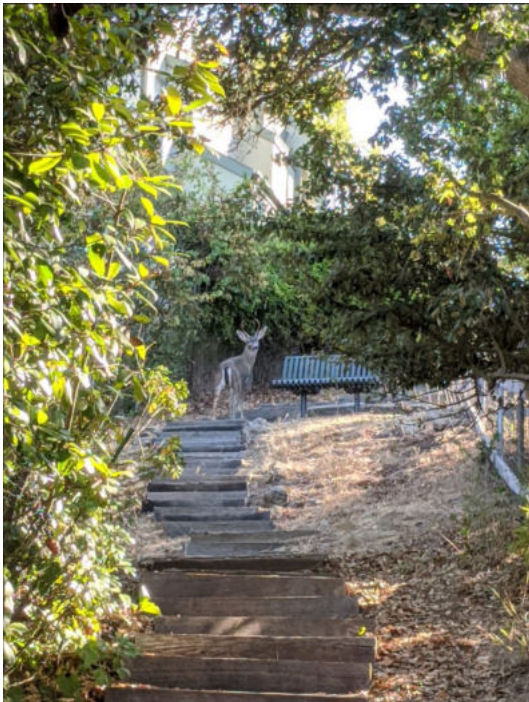
Start/End: [NW corner of Shattuck Avenue and Eunice Street](#)

Distance: 2 miles

Accessibility: A moderate hike with some uphill, a 500-foot elevation gain. Well-behaved dogs on leash are permitted.

This area was developed mainly in the first part of the twentieth century. The neighborhood features fine historic architecture (including some very elegant homes), gardens, street trees, and several interesting paths. There is some uphill exercise, but we will take a moderate pace and will stop along the way to notice various features. [READ MORE](#)





[From the Rose Garden to Vollmer Peak](#)

When: Saturday, December 17, 8:30 a.m.–1 p.m.

Leader: Tamara Gurin

Start/End: [1200 Euclid Ave \(in front of the Rose Garden sign\)](#) (If you are driving, please allow ample time to find parking—some nearby streets have time limited parking on Saturdays.)

Distance: 8 miles

Accessibility: Strenuous hike, mostly on trails, with an elevation gain of 1,600 feet. Well-behaved dogs on leash are welcome.

Prepare to sweat and have a great workout as we climb 1,600 feet from Berkeley's Rose Garden to Tilden Park's Vollmer Peak and then back to the Rose Garden. We will take sidewalks and 5 stairways to get to Tilden, and the rest of the hike will be on the park's trails. [READ MORE](#)

[Step into the New Year](#)

When: Sunday, January 1, 1 p.m.

Leader: Glen Lindwall and John Ford

Start/End: [Dorothy Bolte Park](#), Spruce near Michigan Ave.

Distance: 3 or 4 miles (see below)

Accessibility: Choose between two walk groups—one moderately paced and one vigorous and hilly. Well behaved dogs on leash are welcome.

Welcome the new year with a 3- to 4-mile walk along the Berkeley/Kensington border, including Ye Olde School Trail (shown) with its views of Wildcat Canyon, as well as paths of both Berkeley and Kensington. We will all start together but separate into a moderate-paced group and one that will travel a more vigorous route that is somewhat longer with more up and down. [READ MORE](#)





[Stroll to Spring Mansion](#)

When: Saturday, January 15, 10 a.m.–11:30 a.m.

Leader: Janet Byron

Start/End: [John Hinkel Park amphitheater](#), [Somerset Place](#)

Distance: 1.5–2 miles

Accessibility: Some steep parts and 37 steps total, with options to bypass; well-behaved dogs on leash welcome.

Join BPWA president Janet Byron for a stroll from the newly renovated John Hinkel Park through the Thousand Oaks neighborhood to see the 1912 Spring Mansion, the 12,000-square-foot mansion designed by architect John Hudson Thomas for East Bay developer John Hopkins Spring. [READ MORE](#)

PATH MAINTENANCE WORK PARTIES



Join us for a path maintenance work party!

Friday, December 9, 10 a.m.

Sunday, December 11, 10 a.m.

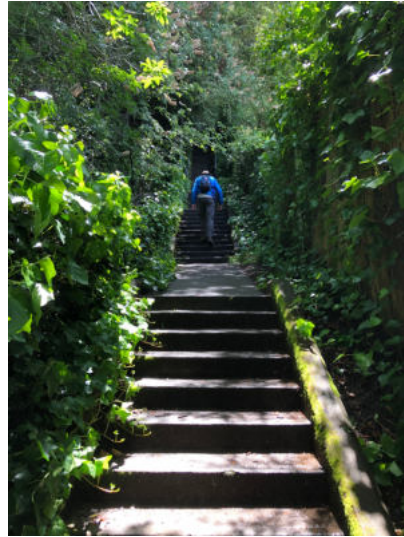
The work is mostly weeding, sweeping, raking, and clipping. We will have gloves and tools available, but feel free to bring your own. Please bring your own water; we won't be offering water or refreshments. Please RSVP to receive an email with the time, date, and meeting place by writing to Mary Lynch at path.maintenance@berkeleypaths.org.

Berkeley Path Wanderers Association

Berkeley Path Wanderers Association (BPWA) is a community organization of people who treasure the public pathways that crisscross our city. [Learn more](#)

The BPWA board generally meets monthly. **Our next board meeting is in January 2023; date TBD.** Guests are welcome! Please contact info@berkeleypaths.com for more information.

To support our path-building efforts, you can [donate online](#). All donations go toward building new paths, repairing and clearing paths, purchasing handrails, and advocating for paths.



DONATE



Copyright © 2022 Berkeley Path Wanderers Association, All rights reserved.

Want to change how you receive these emails?
You can [update your preferences](#) or [unsubscribe from this list](#).

