

[Email not displaying correctly? View it in your browser.](#)



Follow Our News



Ina Coolbrith Path has a new plaque at the bottom highlighting the poet's accomplishments.

Newly Renamed Path Memorializes California's First Poet Laureate and Librarian: Ina Coolbrith

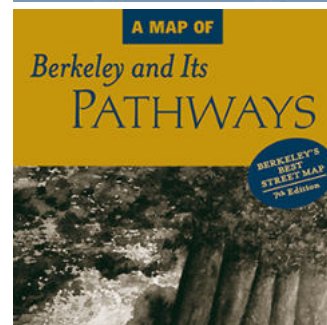
Last year, we renamed Bret Harte Lane to memorialize California's first poet Laureate, [Ina Coolbrith](#). In June, the [Berkeley Historical Plaque Project](#) installed a plaque at the bottom of the path to highlight Coolbrith's contributions to the Bay Area's thriving literary scene in the late 19th Century.

Join or Renew



Did you forget to pay your \$5 dues for 2017? We do not want to lose you. [Please renew today.](#)

Buy Our Map



The New York Times calls it ... "a terrific map of all the secret routes and corridors in Berkeley." It's also the best street map of the city you can buy! [Get your copy.](#)

Support BPWA

The ceremony culminated years of efforts to bring long overdue and richly deserved recognition to Coolbrith, who lived from 1841 to 1928 and is buried with other local luminaries in [Mountain View Cemetery](#) in Oakland.

Coolbrith not only was California's first Poet Laureate but also was the first in the country. In addition, she was the first librarian at the Oakland Public Library, where she mentored an avid young reader named [Jack London](#). Her first book of poetry, [A Perfect Day, and Other Poems](#), published in 1881, launched her long and distinguished career.

[Aleta George](#), author of *Ina Coolbrith: The Bittersweet Song of California's First Poet Laureate*, unveiled the plaque, which [Berkeley Historical Society](#) also sponsored. While writing her book, George frequently walked the paths of Berkeley. She noticed a cluster of stairways and streets named for noted contemporaries of Coobrith: [Harte](#), [Mark Twain](#), [George Sterling](#), [Charles Warren Stoddard](#), and [Joaquin Miller](#). (Aleta will be leading a walk that focuses on Ina Coobrith on Sunday, Nov. 12, at 10 a.m. Watch for more details.) [Read more.](#)

Walk With Us



Wally will help lead his two- and four-footed friends on a tour of Berkeley's Rock Parks.

Pooches on the Paths: Remarkable Rock



Your generosity enables us to build more paths and continue to offer our path-oriented events. [Donate now.](#)

Share Your Skills



We need helping hands both on and off the paths. Discover how you can support our path building and enrich our programs and publicity. [Sign up to help.](#)

Shop Online



We sell Path Wanderer shirts, hats, and tote bags as well as guidebooks, posters, and note cards. [Visit our store.](#)

Get to Know Us

Revelations for Pups and People

Saturday, August 5 @ 10 a.m.

Leaders: Wally and Figgy

Start: [Dorothy Bolte Park \(540 Spruce Street\)](#)

We nominate this quarter's installment of our Pooches on the Paths: All-the-Parks-in-Berkeley series for the Rock 'n Stroll Hall of Fame. On this nearly three-mile route through the Cragmont section of North Berkeley, we'll visit two of Berkeley's lesser-known rock parks, Remillard and Cragmont, and see some of the creative ways neighbors have incorporated indigenous rocks into their landscaping and house facades. Of course, this walk would not be complete without a hike up – yes, you guessed it! – Rock Walk. Expect some hills and stairs, but your reward will be spectacular views, charming canopied paths, and storybook cottages. The pace will be leisurely and, dog or no dog, all are welcome.



Once the sun sets, the Conservatory of Flowers becomes the “screen” for a psychedelic extravaganza.

Mark the Summer of Love

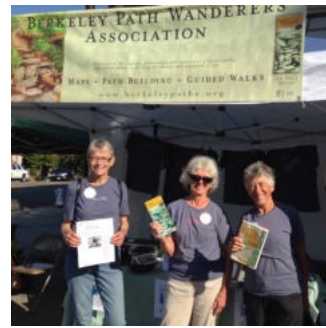
50th Anniversary With A Walk and Light Show in Golden Gate Park

Friday, August 11 @ 7 p.m.

Leaders: Kay Englund and Colleen Neff

Start: Conservatory of Flowers ([100 John F Kennedy Dr, San Francisco](#))

Don your tie-dyed clothes and love beads, put a flower in your hair, and let's celebrate the 50th anniversary of the



Berkeley Path Wanderers Association (BPWA) is a grassroots organization of people who treasure the public pathways that crisscross our city. [Read more.](#)

Meet Our Friends

You'll find links to many other organizations that promote walking, pedestrian safety, protecting the environment, and more on our [website](#).

[Summer of Love!](#) Meet us at 7 p.m. in front of the [Conservatory of Flowers](#) for an hour-long, easy stroll through Golden Gate Park, followed by a BYO picnic dinner and then — what else!? — [a psychedelic light show](#) projected onto the Conservatory facade. We'll put out our blankets, and then walk past the Academy of Science, the bandshell, and the de Young Museum and then around Stowe Lake. We'll return to our blankets to eat and relax until the show starts at sunset. The lights won't go off until midnight, so you can stay as long as you like. (You might want to come in early to take advantage of free admission to special [Friday night events at the de Young Museum](#), starting at 5 p.m.)



Normandy Village, an enclave of storybook-style buildings on Spruce Street, will be a highlight of the sunset walk.

Sunset Hike: Rose Garden and Beyond

Friday, September 8 @ 6 p.m.

Leader: Alina Constantinescu

Start: [Rose Garden \(1200 Euclid\)](#)

Come with us on another after-work hike with Alina. This time, she will lead us on a three-mile loop through the area north of campus, including the Rose Garden; nearby paths and staircases; and, for an extra treat, the storybook architecture of Normandy Village. We'll keep up a moderate clip, taking breaks as needed to enjoy the views and conversation. Bring a headlamp or flashlight. If the evening is clear, we will get some sunset vistas. (The sun

will set at 7:30 p.m.) We'll be back by about 8 p.m., depending on the pace of the group.



These back-to-back bears in front of Haas School of Business were among the favorites on our last Bear Bingo walk.

**Fun and Prizes Await Young Path Wanderers
On I Spy-a-Bear Bingo Walk on Cal Campus
Saturday, September 23 @ 10 a.m.**

Leader: Sandy Friedland

Start: [Steps of Sproul Hall](#), UC Berkeley Campus

Calling all sharp-eyed bear lovers between the ages of four and eight: Come find bears — plus a few other critters — in the wilds of the UC campus. Back by popular demand, this version of Sandy's Bingo walks for kids will cover about two miles and last 90 minutes with frequent stops, including one for refreshments. An adult must accompany every young bear spotter. The route is paved, with some gentle hills and a few streets to cross. Optional lunch in Lower Sproul Plaza or on Bancroft. Walk limited to 20 children. Please rsvp to [Sandy](#) by September 15 to reserve your child's spot for this creative activity.

Upcoming Events



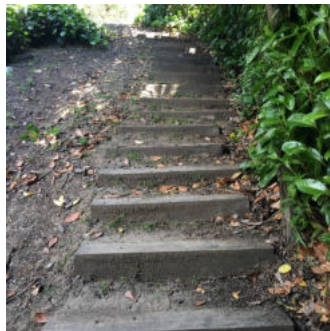
**Come See Us at the 43rd Annual Solano Stroll
Sunday, Sept.10, from 10 a.m. to 5 p.m.**

Be sure to check out our new BPWA tee shirts -- kids' sizes, too! -- plus our maps, hats, books, and posters. You can join or renew your membership at the Stroll, and your membership will run through December, 2018! In our next e-newsletter, we'll tell you the exact location of our booth.

Join Our Work Parties



Ina Coolbrith Path before weeding.



Ina Coolbrith Path after weeding.

**Make Another Path Picture Perfect
Sunday, August 13 @ 10 a.m.**

Help us transform another weed-obscured path into a safe and lovely walkway. Please email [Mary Lynch](mailto:Mary.Lynch@bpwa.org) if you can come, and she will send you the location of the next Path Maintenance Work Party. We'll supply gloves and tools,

but feel free to bring your own. Refreshments will be served.

