

# Berkeley's PATHS

A Newsletter of the Berkeley Path Wanderers Association, February 2004 Vol. 7 No. 1

*Berkeley Path Wanderers Association is a grassroots volunteer group of community members who have come together to increase public awareness of the City of Berkeley's pathways. BPWA hopes to accomplish this goal through volunteer-led path walks, identification and accurate mapping of Berkeley's complete path network, and eventual restoration of paths that have been blocked or obscured.*

## Meetings **Live Oak Park Rec. Center** 7-9 pm **1301 Shattuck Ave** (unless noted)

- Feb 19 General Meeting**  
Everybody Walks by Justine Kaplan;  
Letterboxing by Barbara Roberts
- Mar 18 Board Meeting**
- Apr 15 General Meeting**  
Urban Birds by Alan Kaplan

## Path Walks **RAIN OR SHINE** Saturdays at 10:00 am (allow 2-3 hours)

- Feb 14** Town & Gown Interstices Revisited  
Jim Sharp 841-7271  
Meet at La Loma Avenue and Virginia Street
- Mar 6** Urban-Wildland Interfaces: Links between the city and adjacent parks  
Paul Grunland (510) 526-8001  
Meet at Park Gate and Shasta Road at the fountain, just east of Grizzly Peak Blvd.
- Apr 17** Ghost Campus: UC that once was  
Bruce Goodell (510) 843-5356  
Meet at Sather Gate. It's Cal Day, too!
- May 22** From (Space) Tower to Town  
Steve Geller (510) 849-4115  
Meet at the Space Sciences Bldg above Lawrence Hall of Science, off Centennial Dr

## First Wednesday Walks Saturdays at 10:00 am (allow 2-3 hours)

- Mar 3 & Apr 7** meet at the Marin Circle led by Jacque
- May 5** meet at the reservoir at Spruce and Grizzly Peak led by Paul Grunland 526-8001

## Feb. 19th Talk: Paths and Keeping Fit, Plus, Introducing Letter Boxing

Justine Kaplan, coordinator of Berkeley's Active Choices and Everybody Walks programs will discuss the programs' goals of helping us lead long and healthy lives. The programs are a part of Berkeley's Division of Public Health. It is the city's effort at decreasing chronic diseases like diabetes, bone and joint ailments, and heart failure.

BPWA chair Jacque Ensign's First Wednesday walks have become a staple of Everybody Walks, a program encouraging us all to, literally, take a few extra steps for health.

Active Choices offers six months of "coaching" to relatively inactive people over 50 who live, work, or play in Berkeley. This new three-year program funded with a major grant from the Robert Wood Johnson Foundation. The aim is to overcome barriers that keep people from

becoming and staying active, Kaplan explains. The "coach" will explore the individuals' interests, abilities, needs, and schedules, and help put together a program that works. The key may be finding transportation or companions, or figuring out what kinds of exercise work given physical limitations and needs, Kaplan said. Active Choices also aims at letting people know about new findings on exercise and health, she said.

The talk will be at 7 pm at the Live Oak Park Recreation Center, 1301 Shattuck, Berkeley. Everyone is welcome.

## What's Letter Boxing?

Letter boxing started among walkers in England who stride along miles of paths and who like a little entertainment along the way. *continued on back*

## Feb 14th Walk: Town & Gown Interstices Revisited

On Saturday, February 14 at 10 am, please join Northside resident Jim Sharp for a special Valentine's Day tribute to the pathways and attractions of Daley's Scenic Park and UC Berkeley's rapidly evolving Northeast Quadrant. Berkeley Landmarks website creator Daniella

Thompson and other experts on the local heritage will join us.

We will meet three blocks north of the UC campus at the top of the steps which connect La Loma Avenue with Virginia Street. Plan for about a two hour exploration of stairs, hills, and off-pavement surfaces.



**BPWA**  
1442A Walnut Street, #269  
Berkeley, CA 94709

### Board Members

- JACQUE ENSIGN, chair
- PAT DE VITO, archivist
- ELEANOR GIBSON, recording secretary
- SUE FERNSTROM, treasurer
- KAREN KEMP, newsletter
- JAY CROSS, webmaster
- CHARLIE BOWEN
- TOM EDWARDS
- LISA FRIEDAN
- SANDY FRIEDLAND
- ALAN KAPLAN
- PAUL MAHEU
- EMMA MORRIS
- SUSAN SCHWARTZ
- HELEN WYNNE

Please renew your membership so that we can continue our work. Donations are welcome.



## Saluting Seating

BPWA wants to salute the generous Berkeley homeowners who put out seating for tired path wanderers and other walkers. An outstanding example is this memorial bench at 1328 Walnut St. We are putting together a photo collection of these imaginative and beautiful resting places — and just plain functional ones. Can you send addresses of examples you have seen? Send a note to BPWA at 1442A Walnut St., #269, Berkeley 94709; or email board member Susan Schwartz at [susanschwa@aol.com](mailto:susanschwa@aol.com).

## Berkeley Paths in Stories and Photos

At our last meeting, members and friends swapped stories and lore about the paths. Now BPWA has a place on the web for sharing stories and photographs of Berkeley paths. Take a look!

Go to [www.BerkeleyPaths.org](http://www.BerkeleyPaths.org), click Path Stories. Then click on the name of a path in the right column to view what people have contributed thus far.

Add your observations by clicking on



## Letter Boxing *continued*

Barbara Robben, longtime BPWA member, surprised the past Everybody Walks in Berkeley group with her own Letter Boxing game. The entertainment involves notebooks, some ink stamps and pads, and secretly-placed plastic cannisters, hidden along various Berkeley pathways. Walkers have to open the cannisters and stamp their notebook-like passports



with the stair's representative stamp. Then, replace the kit and rehide the cannister. The goal: to see how many of the 136 paths in Berkeley walkers have trod. Just review your path passport to verify.



Come hear Barbara talk more about Letter Boxing at our February 19th General meeting.

## Bird Life in the City: Our April 15<sup>th</sup> Talk

What birds are we likely to see as we wander paths? When and where is it easiest to see birds in the city? Why do some birds flourish in cities, while others vanish? How can we encourage bird life in cities, and do some efforts risk more harm than good?

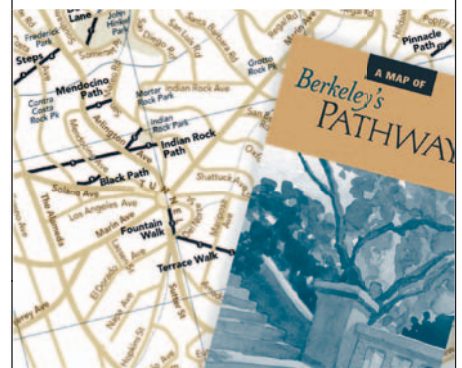
Alan Kaplan, Tilden Park Naturalist and BPWA Board Member, will speak on birds in the city at Berkeley Path Wanderers' April 15 general meeting, 7 pm at Live Oak Recreation Center, 1301 Shattuck, Berkeley.

Many know Kaplan from his more than 30-year career with East Bay Regional Parks. With a masters degree in entomology and hobbies that range from aikido to Scottish folk dancing, he is interested in everything and loves to pass on his knowledge. At Tilden Regional Park, besides frequent bird walks, he offers programs ranging from tiny soil organisms to the stars, and ancient nature myths to the most recent findings of science.

## Order Notecards or a Map

Purchase a map or some notecards at our General Meetings or at one of our walks. Or, purchase by mail. Maps cost \$5.36 (\$3.95 for members). A set of 4 notecards cost \$6.50. Send a self-addressed, stamped business envelope with 60 cent postage for either a map or a set of notecards. Make checks payable to:

**Berkeley Path Wanderers Association  
1442A Walnut Street, #269**



[www.berkeleypaths.org](http://www.berkeleypaths.org)

**Stay in the Email Loop** Please email Lisa Frieden, [lisafr@comcast.net](mailto:lisafr@comcast.net), to receive email alerts about upcoming walks, meetings, and other BPWA-related activities.

*If you have any concerns about path issues please call Jacque at 524-4715.*

Annual membership in Berkeley Path Wanderers Association is \$5.00 per household **due January 1st** of each year. Donations are always welcome. Benefits include newsletter, and BPWA mailings. Mail form with check or money order, payable to:  
**BPWA, Berkeley Partners for Parks  
1442A Walnut St., #269, Berkeley, CA 94709**  
(BPWA is a member of Berkeley Partners for Parks, a 501(c)(3) tax-exempt organization.)

## BPWA Membership Form **Please print**

Name \_\_\_\_\_

Address \_\_\_\_\_

City \_\_\_\_\_

Zip \_\_\_\_\_

Email \_\_\_\_\_

Telephone \_\_\_\_\_

# Berkeley's PATHS

A Newsletter of the Berkeley Path Wanderers Association, June 2004 Vol. 7 No. 2

*Berkeley Path Wanderers Association is a grassroots volunteer group of community members who have come together to increase public awareness of the City of Berkeley's pathways. BPWA hopes to accomplish this goal through volunteer-led path walks, identification and accurate mapping of Berkeley's complete path network, and eventual restoration of paths that have been blocked or obscured.*

**Meetings** Live Oak Park Rec. Center  
7-9 pm 1200 Shattuck Ave (unless noted)

**July 29 Board Meeting**

**Aug 19 Board Meeting**

**Sept 16 Annual Meeting**  
Chuck Wollenberg on Berkeley  
History—at the Hillside Club

**Path Walks** RAIN OR SHINE  
Saturdays at 10:00 am (allow 2-3 hours)

**Jun 19** Three Writers, One Artist, Many Paths  
Dale Miller, 524-4758  
Meet at the bottom of Terrace Walk.

**July 10** The (Partly) Improved Paths  
Charlie Bowen, 540-7223  
Meet at Park Hills Road and Shasta, off Grizzly Peak  
Blvd, at the fountain.

**Aug. 7** Shorebird Park and Bay Trail Extension  
Patty Donald, 644-8623  
Meet at the foot of University Avenue at  
Shorebird Park Nature Center (a strawbale  
construction building!).

**Sept. 11** A Stroll in Miller/Knox Regional Park  
Sandra and Bruce Beyaert, 235-2835  
Great views of the Bay and Ferry Point

**First Wednesday Walks**  
10:00 am (allow 2-3 hours)

**July 7** meet at Aquatic Park near the  
children's playground parking lot. Note: THIS  
WALK IS STROLLER AND KID FRIENDLY!  
Emma Morris, 525-4894

**Aug 4** Volunteer is needed—please call  
Alan Kaplan, 526 7609

## Building Paths—See the Recent Progress



Since the beginning of the year, good things have been happening on several unimproved paths, due to the righteous physical labor of the Boy Scouts from Troop 19 and a group of great volunteers from BPWA. We invite everyone to look at the results on these paths:

### **Lower Glendale Path (#84):**

The big news is that the City of Berkeley has built a concrete stairway at the bottom of this path—the first new staircase in many years, and we hope the beginning of a fruitful new collaboration with the city: their contractors can build fairly short concrete staircases on the steep path segments, and our volunteers can clear, improve drainage, and install wooden steps on the gentler segments.

Neighbors have removed fences that were blocking the path and BPWA volunteers have cleared the entire pathway and

**The entrance of lower Glendale Path (above) with newly poured concrete steps was built by the City in May. The path (circled at left) is in the Berkeley View Terrace neighborhood which was platted in 1926 by L'Hommedieu and Wilson Inc. The plat included 16.5 pathways, none of which were built. Ina Way is called Queens Road today.**

**BPWA**  
1442A Walnut Street, #269  
Berkeley, CA 94709

### **Board Members**

JACQUE ENSIGN, chair  
PAT DE VITO, archivist  
ELEANOR GIBSON, recording secretary  
SUE FERNSTROM, treasurer  
KAREN KEMP, newsletter  
JAY CROSS  
CHARLIE BOWEN  
TOM EDWARDS  
LISA FRIEDAN  
ALAN KAPLAN  
EMMA MORRIS  
SUSAN SCHWARTZ  
HELEN WYNNE

**Webmaster** NIRANJAN VISSA

### Building Paths *continued*

installed wood-tie steps in the middle section. We hope to have the path done and signs installed before the end of this year.

**Middle Glendale Path (#83):** We hope to begin clearing and installing steps on this path after a planned survey by the City of Berkeley.

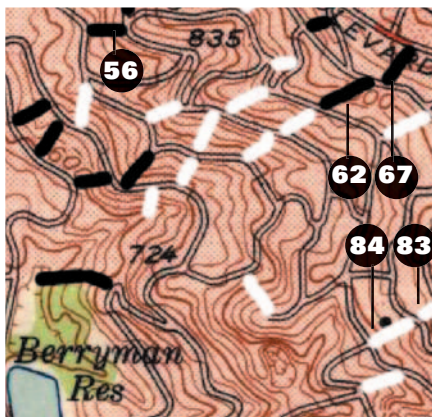
**Upper Glendale Path (#82):** A January work party did the huge task of clearing berry bushes from this path. Despite rudimentary temporary steps, the VERY steep, rocky section at the bottom of the path remains a barrier. We are looking for someone with landscape design ideas to help figure out a plan for that portion!! The three Glendale Paths are a key element in our planned Ridge-to-Bay "Urban Trail," which continues up to Tilden Park via Atlas Path, a major project completed a couple of years ago by Eagle Scout candidates from Berkeley Boy Scout Troop 19.

**Stoddard Path (# 67):** Cal students started the work on this path last spring and then several BPWA work-parties—with great help from neighbors—have completed this path from Grizzly Peak down to Miller.

**Upper Stevenson Path (#62):** Major clearing has been done and steps have been installed on the steepest sections. Additional steps are needed, but the path is now very walkable. It's possible to continue down on lower Stevenson Path, but

our goal is to get city help on a few steps at the bottom, after which we'll install wooden steps on the steep upper end.

**Sterling Path (#56):** Three recent Eagle Scout projects from Troop 19 have made it much easier and safer to walk the dirt portions of beautiful Sterling Path, from Cragmont Street up to Keeler Path and the "back entrance" to Remillard Park. Scouts Owen McDougall, Adrian Delmer, and Luc Maheu installed steps, drainage diverters, and a small retaining wall, and cleverly incorporated a raised manhole. The last project, by Luc Maheu, also added a lovely community bulletin board.



**Stoddard Path (upper right of map)—now built—leads from Grizzly Peak Boulevard to the top of Stevenson Path (also recently improved) at elevation 1000 feet. BPWA has their sites on the remaining unimproved paths (in white) with the goal of creating another chain of pathways from peak to base.**



**Sterling Path's new community bulletin board.**

**Wilson Walk (#96):** Thanks to UC students last fall, major clearing was done. BPWA volunteers recently put in steps on the lower part of the path, and we are progressing towards the top. With your help at the next work parties, we hope to make this steep but beautiful path near Lawrence Hall of Science usable this year.

Another fruitful collaboration has been with the East Bay Conservation Corps' Urban Tree Recycling Mill, which mills urban trees into fencing and other landscaping products while providing training for at-risk youth. Our wood steps are now recycled from the urban forest, 992 7800.

#### ARE YOU INTERESTED IN THE UNIMPROVED PATHS?

Charlie Bowen is always looking for more people to build these paths. Feel the rewards by what a group can accomplish under 2 hours; the *before* and *after* are incredible. We always have refreshments, end promptly, and it feels wonderful to use your muscles doing a bit of community service. Contact Charlie to participate or get more information—540-7223 or charlie\_paths@comcast.net.

### May is Berkeley Path Wanderers Association Month

At the May 25th City Council meeting Betty Olds, on behalf of the council, proclaimed May to be Berkeley Path Wanderers Association Month in honor of all the success achieved by all who have contributed to preserving, restoring and creating pathways in Berkeley for all. Go to our website to see the proclamation in full [www.berkeleypaths.org](http://www.berkeleypaths.org).



*If you have any concerns about path issues please call Jacque at 524-4715.*

Annual membership in Berkeley Path Wanderers Association is \$5.00 per household **due January 1st** of each year. Donations are always welcome. Benefits include newsletter, and BPWA mailings. Mail form with check or money order, payable to: BPWA, Berkeley Partners for Parks 1442A Walnut St., #269, Berkeley, CA 94709 (BPWA is a member of Berkeley Partners for Parks, a 501(c)(3) tax-exempt organization.)

### BPWA Membership Form **Please print**

Name \_\_\_\_\_  
Address \_\_\_\_\_ City \_\_\_\_\_ Zip \_\_\_\_\_  
Email \_\_\_\_\_ Telephone \_\_\_\_\_

# Berkeley's PATHS

*Berkeley Path Wanderers Association is a grassroots volunteer group of community members who have come together to increase public awareness of the City of Berkeley's pathways. BPWA hopes to accomplish this goal through volunteer-led path walks, the identification and accurate mapping of Berkeley's complete path network, and the eventual restoration of paths that have been blocked or obscured.*

A Newsletter of the Berkeley Path Wanderers Association September 2004 Vol. 7 No. 3

## *Historian Chuck Wollenberg Will Speak at Our Annual Meeting, Sept. 22, at the Hillside Club*

Chuck Wollenberg, the widely respected expert on California and local history, will be the featured speaker at the BPWA annual meeting, September 22, at the Hillside Club. Known for his broad knowledge and refreshing style, Chuck will discuss Berkeley in the early decades of the 20th Century. He'll explain the context for the path building of that era, when businessmen and intellectuals aspired to create a "Utopia of the Pacific." Topics will include local movements, such as the Hillside Club's Arts & Crafts ideals; and national movements, like the City Beautiful campaign. The author of several books, Chuck always reveals the complexities of a diverse social fabric, telling of the powerful as well as the marginalized.

A third generation Berkeley resident, he will probably surprise you with little-known facts, like how Bernard Maybeck's son named himself after Chuck's great-grandfather.

*Chuck teaches history at Vista College, where he is the Chair of the Social Science department. He also teaches a Berkeley history class at the Berkeley Public Library, for which he has written Berkeley: A City in History. Full text is available on-line at <http://berkeleypubliclibrary.org/system/historytext.html>. Chuck is also a member of the Regional Oral History Project at UC Berkeley and serves as a historical consultant to the Oakland Museum.*

## **Meetings** Live Oak Park Rec. Center

**7-9 pm 1301 Shattuck Ave (unless noted)**

**Sept 22 Annual Meeting**  
Featuring Chuck Wollenberg  
on Berkeley History  
HILLSIDE CLUB

**Oct 21 Board Meeting**

**Nov 18 General Meeting**  
Elections

## **Path Walks** RAIN OR SHINE Saturdays at 10:00 am (allow 2-3 hours)

**Sept 11** Miller/Knox Regional Shoreline  
Sandra and Bruce Beyaert 235-2835  
Meet at the first parking lot off Dornan Drive in Miller/Knox, Point Richmond.

The walk will explore Point Richmond's past and present. Expect some hills, a moderate pace, scenic vistas, and birdwatching. Bring binoculars, water, and snacks.

**Oct 2** A Walk in the Elmwood  
Ron Sipherd 654-5448  
Meet at Elmwood Avenue at Ashby.

Preview the itinerary, map, and photos at [www.well.com/~ronks/pix/cenawalk](http://www.well.com/~ronks/pix/cenawalk).

**Nov 6** Early North Berkeley  
Marilyn Siegel 549-2908 & Mardi Mertens  
520-4468. Meet at the Marin Circle.

**Dec 11** Paths, Creeks and History  
Susan Schwartz 848-9358 Meet at the main entrance to Live Oak Park Community Center, at Shattuck & Berryman.

## **First Wednesday Walks**

**10:00 am (allow 2-3 hours)**

**Oct 6** The Ohlone Greenway: Public Art, Community Gardens & Nature Restoration. Meet, north side of North Berkeley BART. led by Susan Schwartz 848-9358



**Mortar Rock Park exemplifies the artistic pairing of urban and rural typical in hilly streetcar neighborhoods of 100 years ago.**

**BPWA**  
1442A Walnut Street, #269  
Berkeley, CA 94709

### **Board Members**

JACQUE ENSIGN, chair  
PAT DE VITO, archivist  
ELEANOR GIBSON, recording secretary  
SUE FERNSTROM, treasurer  
KAREN KEMP, newsletter  
JAY CROSS  
CHARLIE BOWEN  
TOM EDWARDS  
LISA FRIEDAN  
SANDY FRIEDLAND  
ALAN KAPLAN  
PAUL MAHEU  
EMMA MORRIS  
SUSAN SCHWARTZ

**Webmaster** NIRANJAN VISSA

## Grant Received for Path Improvements

The Federal Emergency Management Agency (FEMA) has awarded the City of Berkeley a \$413,000 Fire Prevention and Safety Grant to reduce fire hazards in the Berkeley hills and to improve community and fire fighter safety. The city will provide an additional \$177,000. A FEMA official presented the money to the city August 23.

About one-third of the grant will go toward creating and implementing a program to manage flammable vegetation on pathways in the Berkeley hills, an acknowledgement of the importance of the system for public safety. Bill Greulich, emergency services manager for the Berkeley Fire Department, asked BPWA to assist

the city in analyzing the hill paths and devising an effective plan for fuel reduction. Once improved, the paths would serve as firebreaks and important evacuation routes.

“We are delighted that the fire department wants us as partners in this vital project and intends to use the grant to open as many of the impassable paths as possible,” said Charlie Bowen, chair of the BPWA Unimproved Path Committee. “We hope the city will improve the most difficult sections and our volunteers will complete the rest.”

At the award ceremony, city officials praised BPWA for its hard work and results-oriented approach. “Our volunteer crews, along with the Boy Scouts and CalCorps teams, are the ones who truly deserve to be honored,” said Bowen.

## September 12th — Solano Stroll

Visit our booth at the Solano Stroll. We'll have maps, notecards, and newsletters, plus displays of newspaper articles and pictures.

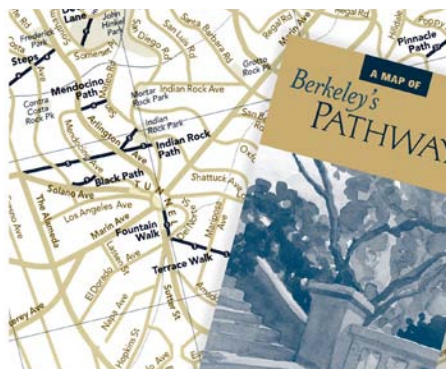
Come staff our booth! Volunteer for only 2-3 hours at BPWA's Solano Stroll booth. Call Emma Morris at 525-4894 for more information.

## Board Elections November 18th

We have a number of board members who have fulfilled their maximum two terms. Seven positions will be open. Please come to our general meeting November 18<sup>th</sup> at the Live Oak Recreation Center to vote for new board members. Nominees are: Prescott Cole, Mary Lynch, Emma Morris, Will Schieber, Marilyn Siegel, Niranjana Vissa and Barbara West.

### Introduction of Board Nominees

Prescott, Mary, Will, and Marilyn are all staunch unimproved-path workers who love walking the paths. Marilyn has also led a number of walks. Emma is running for a second term and has organized the Solano Stroll and other events. Barbara is a treasurer for the Berkeley Opera, and has a fundamental interest in urban natural experiences. Niranjana redesigned our website and is the webmaster.



**Stay in the E-mail Loop** Please e-mail Lisa Frieden, [lisafr@comcast.net](mailto:lisafr@comcast.net), to receive e-mail alerts about upcoming walks, meetings, and other BPWA activities.

**Request an E-Newsletter** Save us mailing expenses by getting your BPWA newsletter electronically. Send an e-mail to [info@berkeleypaths.org](mailto:info@berkeleypaths.org) telling us we can send you an e-newsletter rather than a hard copy. In the subject line, enter “e-newsletter only.”

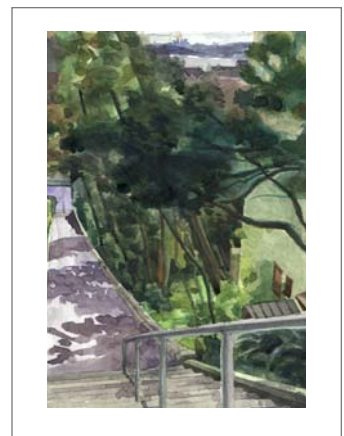
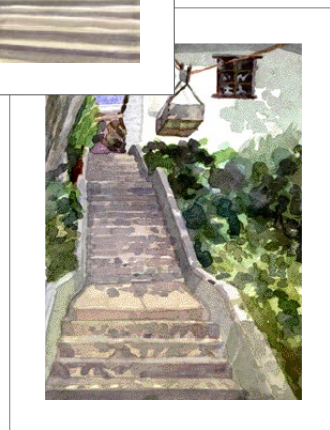
## Order Notecards or a Map

BPWA maps—\$5.36 (\$3.95 for members)—and packs of four different note cards (\$6.50) are available at: BPWA meetings, the Solano Stroll, or BPWA walks. To purchase by mail: Send a self-addressed, business envelope, stamped with \$.60, for each map or set of cards. Make checks payable to:

**Berkeley Path Wanderers Association**  
1442A Walnut Street, #269  
Berkeley, Ca 94709



[www.berkeleypaths.org](http://www.berkeleypaths.org)



From left: Visalia Steps, Fountain Walk, Billie Jean Walk, and The Cutoff.

## September 19th —

## How Berkeley Can You Be Parade

Join the Berkeley Path Wanderers and the fun at this year's parade while publicizing the paths. Please contact Niranjana Vissa at [info@berkeleypaths.org](mailto:info@berkeleypaths.org)

*If you have any concerns about path issues please call Jacque at 524-4715.*

Annual membership in Berkeley Path Wanderers Association is \$5.00 per household, **due January 1st** of each year. Donations are always welcome. Benefits include a newsletter, and BPWA mailings. Mail form with check or money order, payable to:

BPWA, Berkeley Partners for Parks  
1442A Walnut St., #269, Berkeley, CA 94709

(BPWA is a member of Berkeley Partners for Parks, a 501(c)(3) tax-exempt organization.)

## BPWA Membership Form Please print clearly

Name \_\_\_\_\_

Address \_\_\_\_\_

City \_\_\_\_\_

Zip \_\_\_\_\_

Email \_\_\_\_\_

Telephone \_\_\_\_\_

I would like my newsletter sent via e-mail and have included my e-mail address.

# Berkeley's PATHS

*Berkeley Path Wanderers Association is a grassroots volunteer group of community members who have come together to increase public awareness of the City of Berkeley's pathways. BPWA hopes to accomplish this goal through volunteer-led path walks, the identification and accurate mapping of Berkeley's complete path network, and the eventual restoration of paths that have been blocked or obscured.*

A Newsletter of the Berkeley Path Wanderers Association December 2004 Vol. 7 No. 4

## Path-Building is Accelerating

We last reported to you on the progress of our work on the unimproved paths in our June 2004 newsletter. Since then there are many exciting new developments. The SF Chronicle wrote a great article about us in July; we finished 2 more paths; we've gotten new volunteers—old, young, and in-between—and we have several more paths that we anticipate completing in 2005.

First, we have finished building Wilson Walk and Upper Stevenson Path. And Lower Stevenson Path is on its way to completion.

**Wilson Walk** does not yet have signs, but one can find the top of the path between 1504 and 1506 Summit Road and the bottom between 9

and 14 Wilson Circle. When we started Wilson Walk in late April it was almost nearly impassible, very steep, with lots of brush and ground vegetation. By mid-October we were installing the last steps by an enthusiastic group of UC Berkeley students working with the CalCorps service organization. Most of them had never used picks, mattocks or sledge hammers, but they were quick learners and they had a great time.

Now the path has 100 steps, so walking up it will give one a good workout and walking down some lovely views.

**Upper and Lower Stevenson Paths** have seen rapid progress throughout November and December, with a total of 80 steps installed between the two paths. Ground-clearing has been completed on both, and steps have been installed along the entire length of Upper Stevenson. Lower Stevenson Path, with 39 steps installed, is more than half way done.

### Help from the kids

The second exciting thing in our path-building efforts is the new people who are getting involved—many of them young. This fall Lower Glendale Path had the middle segment improved by Gavin Taylor from Scout Troop 19 as an Eagle project, and it will benefit from another Eagle

## Meetings **Live Oak Park Rec. Center**

**7-9 pm 1301 Shattuck Ave (unless noted)**

**Jan 20 Board Meeting**

**Feb 17 General Meeting**  
Speaker to be announced

**Mar 17 Board Meeting**

**Path Walks** RAIN OR SHINE  
10:00 am (allow 2-3 hours)

## Saturday Walks

**Jan 22** Pt. Molate  
**Marilyn Siegel 549-2908 zemerlds@aol.com**  
Park near Brothers Lighthouse sign.

**Feb 5** Redwood Park Nature/Mushrooms  
**Robert Mackler 799-6756**  
Redwood Rd. entrance, Redwood Regional Pk.

**Mar 26** Cerrito Creek/Albany Hill  
**Susan Schwartz 848-9358 F5creeks@aol.com**  
Meet at El Cerrito BART.

## First Wednesday Walks

**Jan 5** Live Oak Park Area  
**Jacque Ensign 524-4715**  
Meet at Live Oak Park on Walnut Street

**Feb 2** Wildlife  
**Susan Schwartz 848-9358 F5creeks@aol.com**  
Seabreeze Deli, University Ave. west of 580.

**Apr 6** Wildland/Urban Interface  
**Paul Grunland 526-8001**  
Summit Reservoir at Grizzly Peak & Spruce St.

See [www.Berkeleypaths.org](http://www.Berkeleypaths.org) for walk details.



**Wilson Walk, looking down from the top.**

**BPWA**  
1442A Walnut Street, #269  
Berkeley, CA 94709

### Board Members

JACQUE ENSIGN, chair  
PAT DE VITO, archivist  
ELEANOR GIBSON, recording secretary  
SUE FERNSTROM, treasurer  
KAREN KEMP, newsletter  
JAY CROSS  
CHARLIE BOWEN  
TOM EDWARDS  
LISA FRIEDAN  
SANDY FRIEDLAND  
ALAN KAPLAN  
PAUL MAHEU  
EMMA MORRIS  
SUSAN SCHWARTZ

**Webmaster** WILL SCHIEBER

**Important...** Make your New Year's resolution  
to renew your BPWA membership for 2005 NOW!

## Path-Building (cont.)

project in the spring by a member of Troop 14. The bottom part of Acacia Steps will be built soon by Eagle candidate **Patrick Georgi** from Troop 24. We hope to be ordering signs for Acacia Steps soon!

The **Green Justice Club** from El Cerrito High School had their first outing and thought it was so rewarding that they decided to work again in December and January. And the **Circle K Club** (college-level Kiwanis) at Cal also had a workparty that was a big success. They too want to return in 2005. These young people are now all old hands at path-building, so we are eager to have them back.

This fall we've had elementary-level students providing very welcome help with maintenance on the paths.

The **Berkeley Montessori School** 8<sup>th</sup> grade class has been sweeping paths on Thursday afternoons, arranged by their teacher **Craig Jackson** as part of the Community Service program for their grade. They can transform a path in just over an hour! We also take them on a path walk to introduce them to their neighborhood.

During Thanksgiving week we had an unexpected source of volunteer path workers, when three **Vanderbilt University** students (who originally hail from Orinda and Moraga) contacted us. Their Environmental Ethics course includes fifteen hours of community service, most of which they hoped they could do with us. Their work on Stoddard Path and Wilson Walk was most appreciated.

## A Brief History of Berkeley View Terrace

Berkeley View Terrace, also referred to as Terrace View, is the comparatively little known neighborhood adjacent to the University of California on the north, just below Grizzly Peak Boulevard. It was promoted by **Mason-McDuffie Company** in the 1930's as being a quiet, secluded, and restful location. There was no arterial traffic. Centennial Road—which connects Grizzly to the Lawrence Hall of Science, and streets below—was not completed until decades later. One Berkeley resident recalls walking up Strawberry Canyon in the 1930's when the road ended at the UC Botanical Garden.

By the time the Terrace View area of Berkeley was developed, most people travelled by car. It wasn't essential to have easy access to streetcars although Terrace View was said to be within .7 mile of the Euclid Avenue streetcar line. Travel times were given as 4 minutes to UCB, 5 minutes to downtown Berkeley, 15 minutes to downtown

Oakland, and 40 minutes to San Francisco (to be reduced on completion of Bay Bridge).

The public paths going up and down the steep hills of Terrace View had been planned. However the paths were not a selling point, and were not developed. The City of Berkeley eventually acquired land for Terrace View Park. This park, pleasant with a creek running through it, is bordered by Queens Road, Fairlawn, and Avenida.

On Saturday, April 23 there will be a walk scheduled for this area led by **Charlie Bowen**, BPWA's path-building leader. Meanwhile, you are encouraged to visit Terrace View on your own to appreciate this scenic and somewhat remote part of town.

*By Marilyn Siegel*

[www.berkeleypaths.org](http://www.berkeleypaths.org)



## Out-going & In-coming Board Members

We would like to thank all the dedicated board members who have fulfilled their maximum two terms with incredible diligence and hard work. Thank you!

At our November 18th meeting, five new board members were elected, and **Emma Morris** was re-elected. The new members are: **Prescott Cole, Mary Lynch, Will Schieber, Marilyn Siegel** and **Barbara West**. We would like to welcome them to the board.

## Our New Amplifier for Our Walks

allows the leader to comment on items of passing interest while walking. It takes getting use to, but we hope it enhances the enjoyment of our loyal path wanderers.

## Gray Brechin Needs Your Help!

**Mr. Brechin** is working on a project to identify the legacy of the New Deal in California and would like to find what effect it had on Berkeley.

He suspects that the WPA may have done work on the Berkeley paths, as well as the city's parks. Are you aware of any such contribution?

## About The New Deal Legacy Project

Within the span of less than a decade, a multitude of federally sponsored "alphabet soup" agencies transformed the Golden State. The CWA, WPA, PWA, and others constructed hospitals, schools, auditoriums, firehouses and police stations, post offices, amphitheaters, university buildings, rose gardens, and recreational centers...

Opponents of Roosevelt's programs and reforms sought not only to erase them but even the memory of their accomplishments as an option.

The project will produce a book and photographic exhibition by **Brechin** and photographer **Robert Dawson** and a film by **Christopher Beaver**. It is sponsored by the California Historical Society.

If you know of New Deal projects, participants, or records, please contact:

**Dr. Gray Brechin**, Research Fellow  
U.C. Berkeley Dpmt. of Geography  
501 McCone Hall  
Berkeley, California 94720  
[gbrechin@berkeley.edu](mailto:gbrechin@berkeley.edu)

*If you have any concerns about path issues please call Jacques at 524-4715.*

Annual membership in Berkeley Path Wanderers Association is \$5.00 per household, due **January 1st** of each year. Donations are always welcome. Benefits include a newsletter, and BPWA mailings. Mail form with check or money order, payable to:

BPWA, Berkeley Partners for Parks  
1442A Walnut St., #269, Berkeley, CA 94709

(BPWA is a member of Berkeley Partners for Parks, a 501(c)(3) tax-exempt organization.)

## BPWA Membership Form Please print clearly

Name \_\_\_\_\_

Address \_\_\_\_\_

City \_\_\_\_\_

Zip \_\_\_\_\_

Email \_\_\_\_\_

Telephone \_\_\_\_\_

I would like my newsletter sent via e-mail and have included my e-mail address.